



11SM1-T2



Actual product appearance may vary.

SM Series Subminiature Basic Switch, Single Pole Double Throw (SPDT), 250 Vac, 5 A, Pin Plunger Actuator, Solder Termination

Features

- Long operating life
- Elongated mounting hole for easier, more accurate mounting
- Choice of actuation (plunger, as well as a variety of integral and auxiliary actuators)
- Choice of electrical termination (solder, quick connect, PCB)
- Choice of operating characteristics (sensitive differential travel as low as 0,0254 mm [0.001 in] maximum, low operating force to 0,56 N [2.0 oz] maximum)
- Optional series constructions available (gold contacts for low energy switching, bifurcated gold contacts for maximum reliability, power load switching capability to 11 A)
- MIL-PFR-8805 qualified listings available

Description

MICRO SWITCH™ SM Series subminiature basic switches are used for simple or precision on/off application needs. The MICRO SWITCH™ SM Series switches are slightly larger than the MICRO SWITCH™ SX Series switches. These switches combine small size and light weight with ample electrical capacity, precision operation and long life.

Potential Applications

- Aerospace
- Instrumentation
- Appliances
- Vending machines
- Timing devices
- Office equipment
- Computer/business equipment
- Test instruments
- Medical/dental equipment
- Communications equipment
- HVAC equipment
- Manually operated devices
- Valves

Product Specifications	
Switch Type	MICRO SWITCH™ Subminiature 12,7 mm H x 6,35 mm W x 20,3 mm L [0.5 in H x 0.25 in W x 0.8 in L]
Sealed	No
Ampere Rating	5 A
Circuitry	Single Pole Double Throw (SPDT)
Actuator	Pin Plunger
Termination	Solder
Operating Temperature Range	-55 °C to 125 °C [-67 °F to 257 °F]
Voltage	250 Vac
Approvals	CSA,UL,ENEC
Contact Type	Silver
Operating Force (O.F.)	0,83 N - 1,39 N [3.0 oz - 5.0 oz]
Release Force (R.F.)	0,28 N [1.0 oz] min.
Pretravel (P.T.)	0,5 mm [0.020 in] max.
Overtravel (O.T.)	0,13 mm [0.005 in] min.
Differential Travel (D.T.)	0,1 mm [0.004 in] max.
Operating Position (O.P.)	8,38 mm ± 0,38 mm [0.330 in ± 0.015 in]
Housing Material	General Purpose Phenolic
High Temperature	204 °C [400 °F]
CE mark	61058-1
UL File #	E12252
CSA File #	LR41372
Agency Approvals and Standards	1054
Mounting Centers	9,65 mm [0.38 in]
Maximum Tightening Torque	0,26 N m [2.3 in lb]
Weight	2,72 g [0.006 lb]
Package Height	12,4 mm [0.49 in]
Package Width	6,35 mm [0.25 in]
Package Length	19,8 mm [0.78 in]
Recommended For	Most applications
Comment	Double turret type solder terminals.
Availability	Global
UNSPSC Code	30211905
UNSPSC Commodity	30211905 Snap switches
Series Name	SM

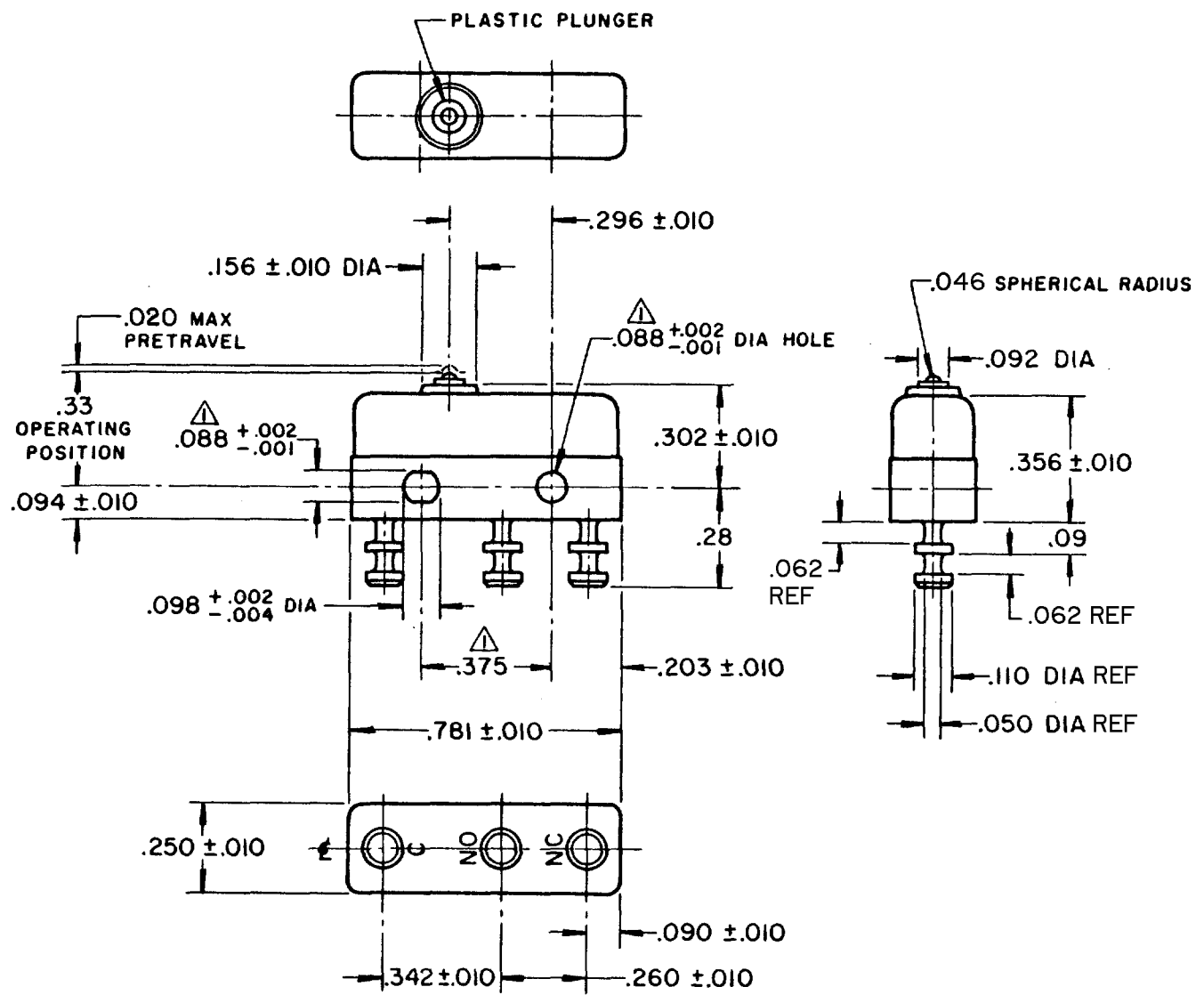


MICRO SWITCH
 FREEPORT, ILLINOIS, U.S.A.
 A DIVISION OF HONEYWELL
 FED. MFG. CODE 91929

SWITCH - BASIC

CATALOG LISTING
11SM1-T2

DRAWING NUMBER **11SM1-T2**
 PAGE 1 OF 1
 ISSUE **M**
 10
 REVISIONS
 A CO22077
 GCH 5 DEC 66
 B CO29449
 SRH 23 FEB 72
 C CO-77768
 SAD 12 JUL 94
 D CO-82803-E
 DLT 8 JAN 97
 E CO-95172
 JJA 23 JUNE 99
 FC-50376 FORMTEK
 DRAWN GCH 5 DEC 66
 CHECK LSD 21 DEC 66
 REPLACES RELEASE NO. CHECK



NOTE -
 ▲ - MOUNTING HOLES WILL ACCEPT PINS OR SCREWS OF .087 MAX DIA ON .375 ±.002 CENTERS
 2 - TERMINALS ARE PLATED FOR SOLDERING

THIS DRAWING COVERS A PROPRIETARY ITEM AND IS THE PROPERTY OF MICRO SWITCH, A DIVISION OF HONEYWELL. THIS DRAWING IS NOT TO BE COPIED OR USED WITHOUT THE APPROVAL OF MICRO SWITCH.

CHARACTERISTICS	ELECTRICAL DATA	SCALE 2 TO 1
OPERATING FORCE ----- 3 - 5 OZ	CONTACT ARRANGEMENT S P D T	DO NOT SCALE PRINT
RELEASE FORCE ----- 1 OZ MIN	30 VOLTS DC RATING	UNLESS OTHERWISE NOTED
DIFFERENTIAL TRAVEL ----- .004 MAX	INDUCTIVE ----- SEA LEVEL ----- 3 AMP	DIMENSIONS ARE IN INCHES
OVERTRAVEL ----- .005 MIN	50,000 FT ----- 2.5 AMP	TOLERANCES ARE:
	RESISTIVE ----- SEA LEVEL ----- 5 AMP	ONE PLACE (.0) ±.030
	50,000 FT ----- 5 AMP	TWO PLACE (.00) ±.015
	MAXIMUM INRUSH ----- 24 AMP	THREE PLACE (.000) ±.005
	L4 5A 250 VAC ~	ANGLES ±
		WEIGHT .006 LB MAX